

Park Residence 2



Project Developer

بصري
BASRI

Saudi Real Estate Redefined



Jeddah — Bride of the Red Sea

Jeddah, the Bride of the Red Sea and the gateway to the Two Holy Mosques, combines historic markets and old alleys with turquoise sea and golden sands. A vibrant city that hosts cultural and entertainment events year-round, it features an architectural mix that blends the heritage of the past with the modernity of the present, making it an ideal destination for living, tourism, and investment.

Darb Al Haramain — The Distinguished Neighborhood

A refined living environment

The neighborhood is rich with parks, green spaces, and recreational amenities, including playgrounds and walking and biking paths. A refined design with wide streets and views of the central park, along with routes prepared for people with disabilities.

Strategic location

The neighborhood connects to all districts of Jeddah through a network of major roads, and provides comfort and privacy for families in an integrated urban environment, making it an ideal destination for living and investment.



Project Location

Park Residence 2 is located in the Darb Al Haramain master plan in Jeddah, with a direct view of the central park and close proximity to the mosque. The location combines nature and strategy, and serves as a key point for living and investment with easy access to essential services and recreational facilities.

King Abdullah Road

Only 110 meters from the project

Haramain Train

Station 1.5 kilometers away

Central Park

Direct view from the project

Jeddah Metro

Future line near the location

Location Importance — Main Roads

Park Residence 2 enjoys a strategic location surrounded by the most important highways in Jeddah:

King Fahd
Road

Haramain
Expressway

Andalus Road

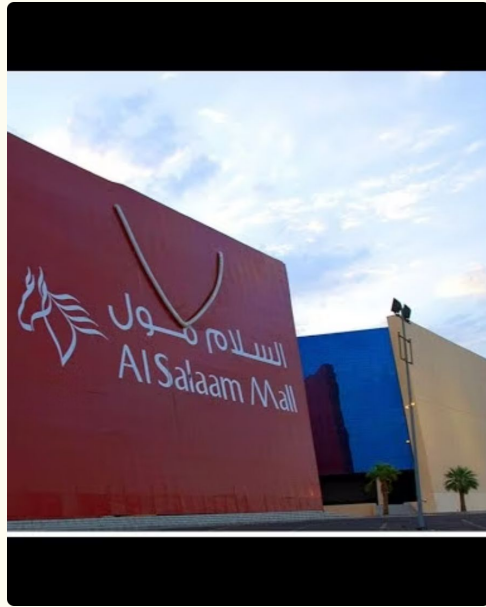
Medina Road
Expressway

Prince Majed Road

Palestine Street

These roads provide excellent access and make Park Residence 2 an ideal hub for living and investing in Jeddah.

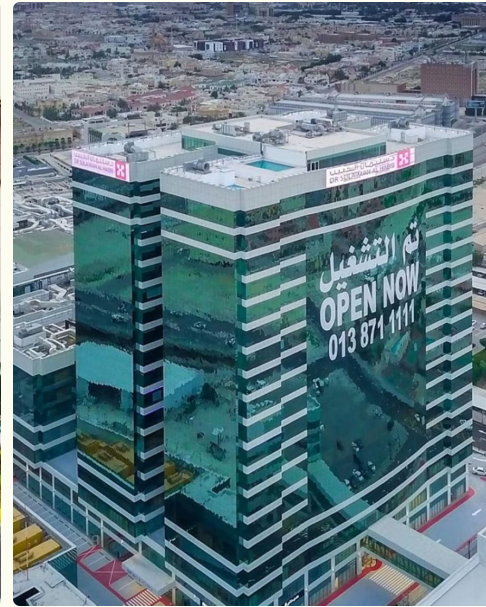
Proximity to Key Destinations



Al Salam Mall
100 meters



East Jeddah Hospital
110 meters



Sulaiman Al Habib Hospital
1 kilometer



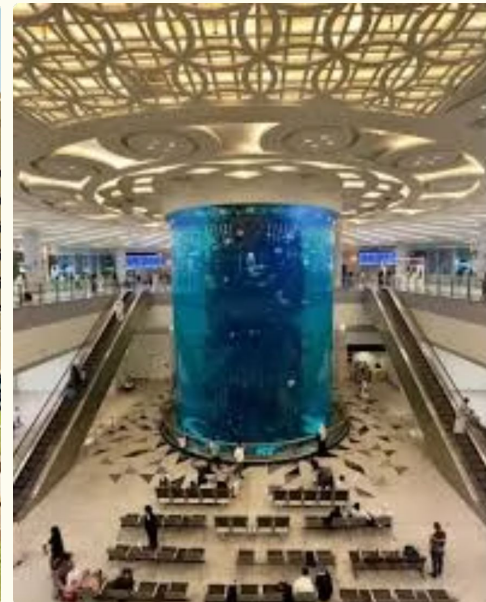
Andalus Mall
1 kilometer



Haramain Train Station
1.5 kilometers



King Abdulaziz University
0.8 kilometers



King Abdulaziz International Airport
18 kilometers



Corniche
4 kilometers



Project Overview

Where luxury meets comfort and the dream becomes reality — enjoy a beautiful view and integrated services at Park Residence 2

Prime Location

Within Darb Al Haramain master plan

Park Views

Direct outlook to the central park

Dual Road Facing

South and north-facing plots

Community Access

Steps away from the mosque



Modern Facade



Project Features



Modern Design



High Quality Build



Hotel-Style Entrance



Large Windows



High Ceilings



8 Elevators



Security Cameras



High Privacy



Smart Home System

Project Services



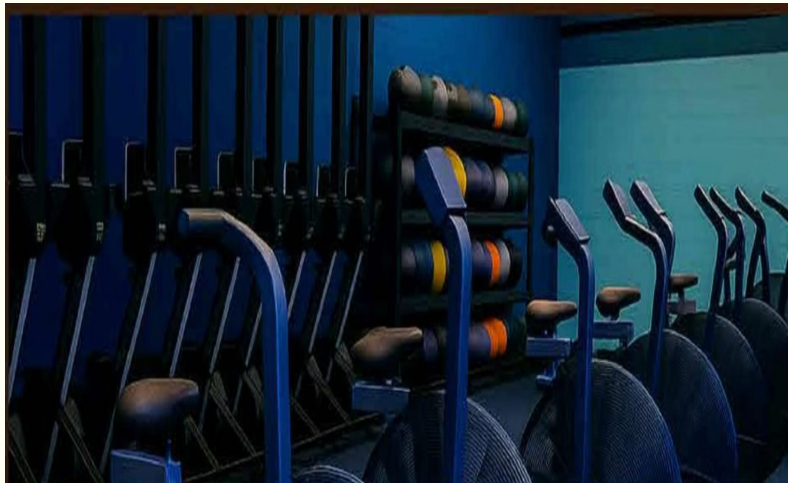
Landscape

Gardens and green spaces thoughtfully designed to provide a calm and beautiful environment



Women's Fitness Club

A private space fully equipped for the comfort and privacy of women



Men's Fitness Club

Equipped with the latest fitness machines for a complete workout experience

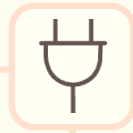


Lounge

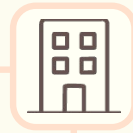
An elegant reception lounge for relaxation and socializing

Project Warranties

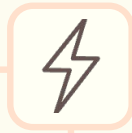
Park Residence 2 offers a comprehensive warranty system of up to 25 years to protect your investment.



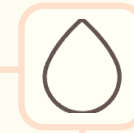
Switches &
Outlets
25 Years



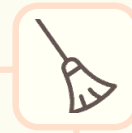
Structural
Frame
15 Years



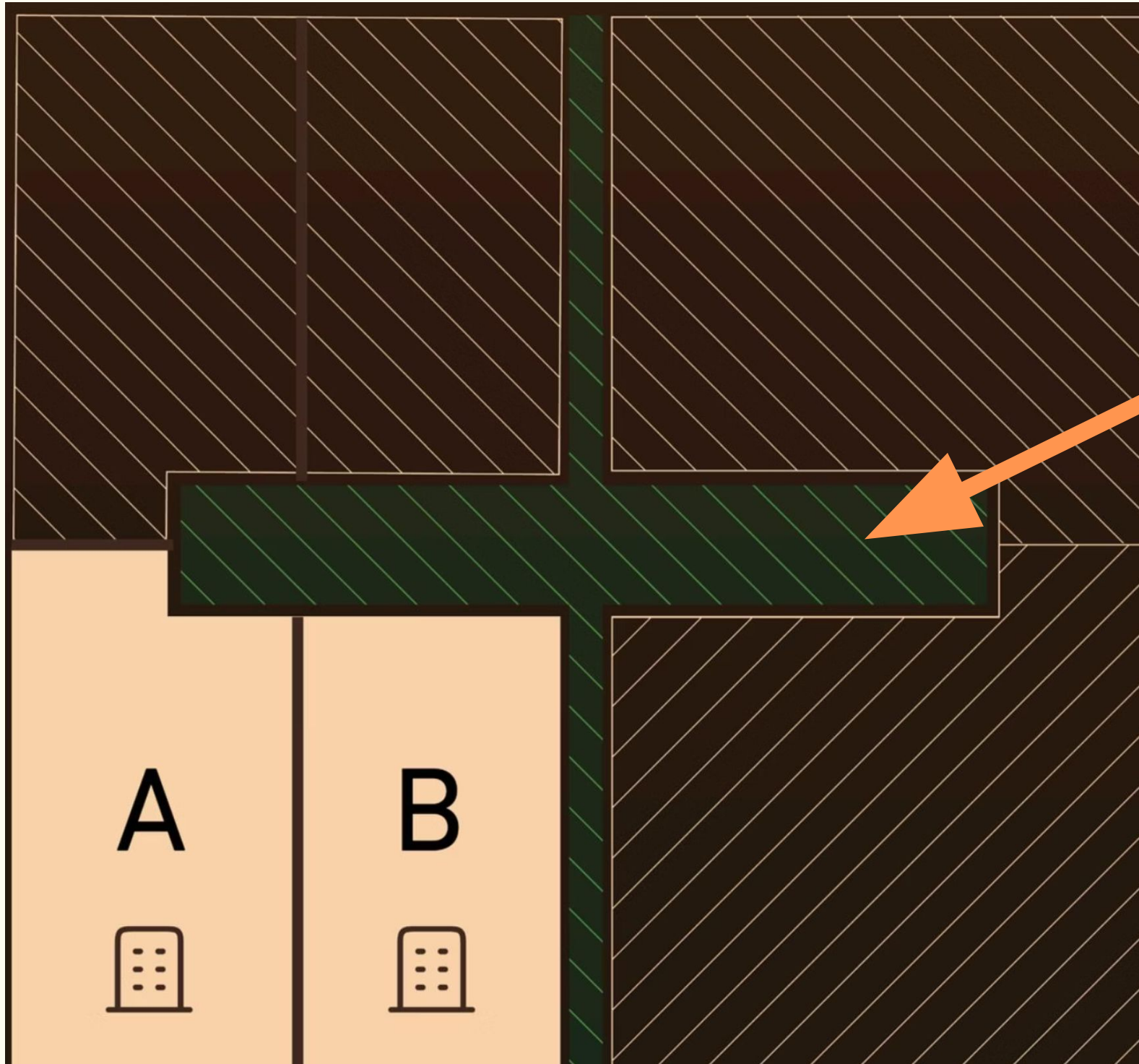
Electrical
Systems
20 Years



Sanitary
Fixtures
5 Years



Owner
Association
1 Year

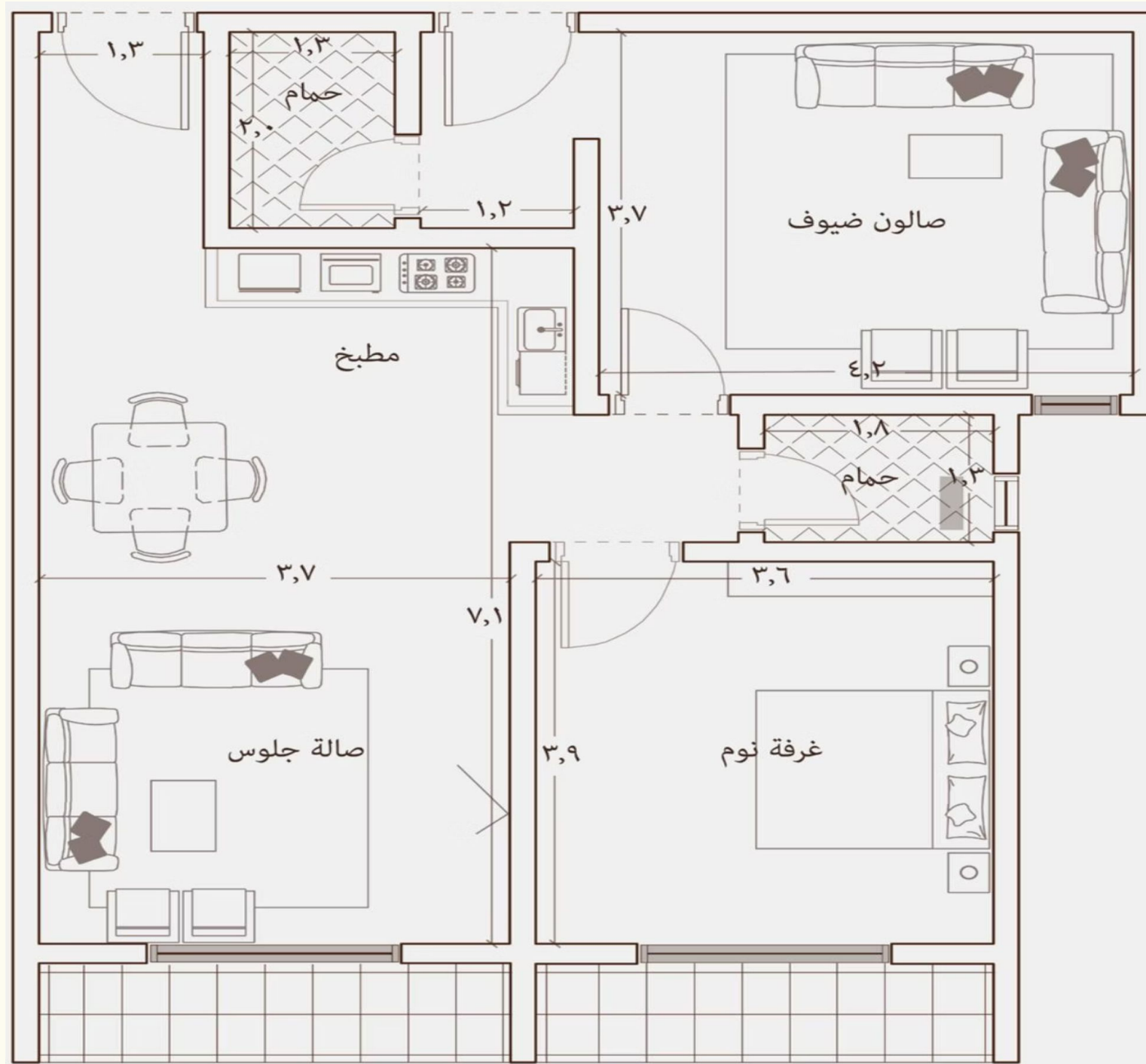


Residential Units — Overview

500 Sqmtr Garden in
between

The project includes a variety of residential units in the S80 and N80 buildings, with areas ranging from 80 to 106.7 m², distributed across 8 floors, featuring front-facing layouts overlooking the central garden and interior layouts overlooking the landscape.

A1 — Front-facing with balcony overlooking the central garden



Unit Details

- 2 bedrooms
- 2 bathrooms
- 1 Kitchen
- 1 Spacious living room
- 2 Balconies

Area: 88 m²

Pricing

Floors (1-4):

ريال 350,000

Floors (5-8):

ريال 370,000

A2 — Front-facing with a balcony overlooking the central garden



Unit Details

- 3 bedrooms
- 3 bathrooms
- 1 Kitchen
- 1 Spacious living room
- 1 Balcony

Area: 106.7 m²

Prices

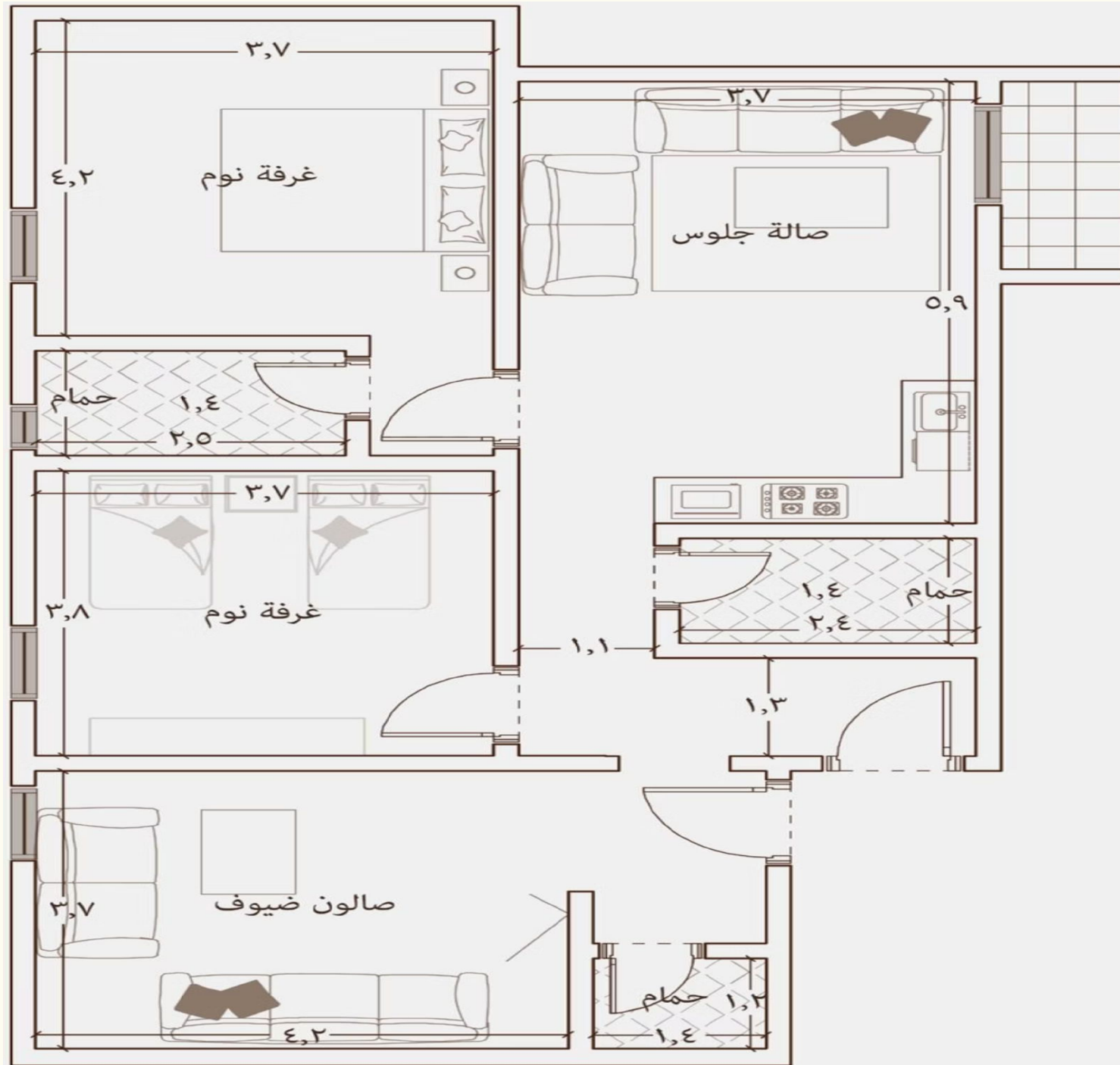
Floors (1-4):

ريال 420,000

Floors (5-8):

ريال 440,000

A3 — Interior with Balcony Overlooking the Landscape



Unit Details

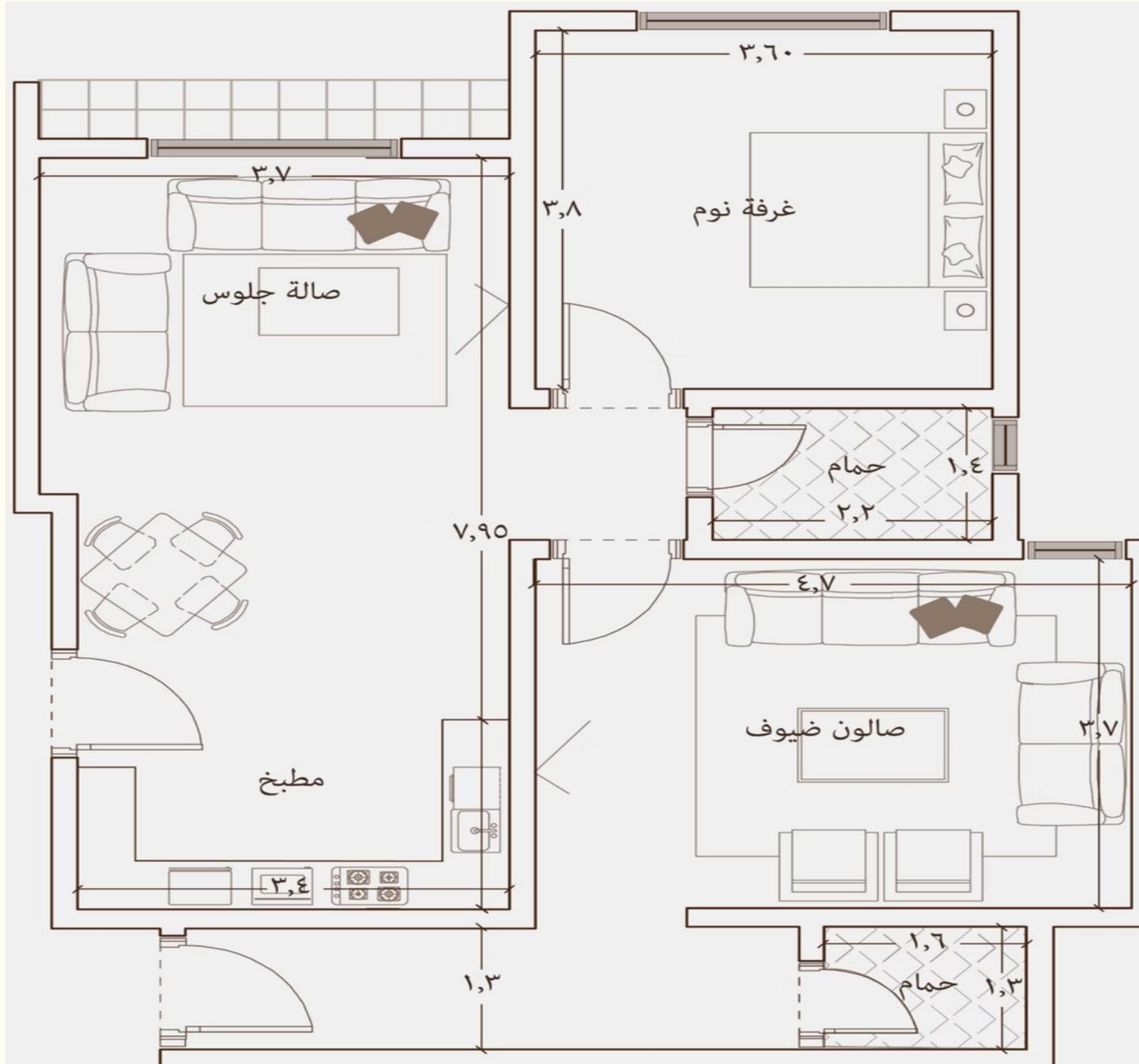
Area: 104 m²

- 3 bedrooms
- 3 bathrooms
- Kitchen
- 1 Spacious living room
- 1 Balcony

Price

ريال 390,000

A4 — Interior with balcony overlooking the landscape



Unit details

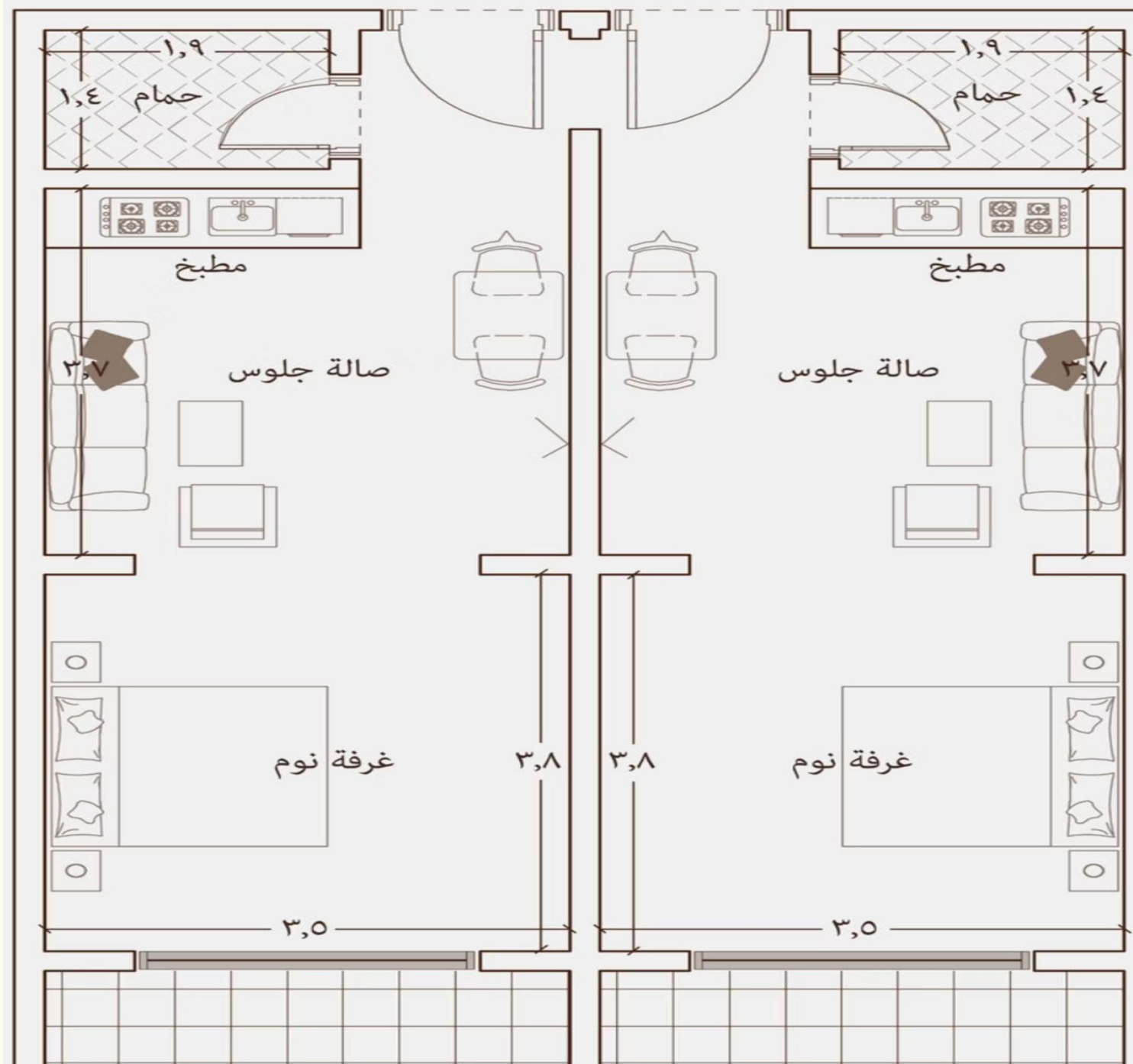
Area: 86 m²

- 2 bedrooms
- 2 bathrooms
- Kitchen
- 1 Spacious living room
- 1 Balcony

Price

ريال 320,000

B1 — Front-facing with a balcony overlooking the central garden



Unit Details

Area: 81 m²

- 2 bedrooms
- 2 bathrooms
- 2 kitchens
- 2 spacious living rooms
- 2 Balconies

Prices

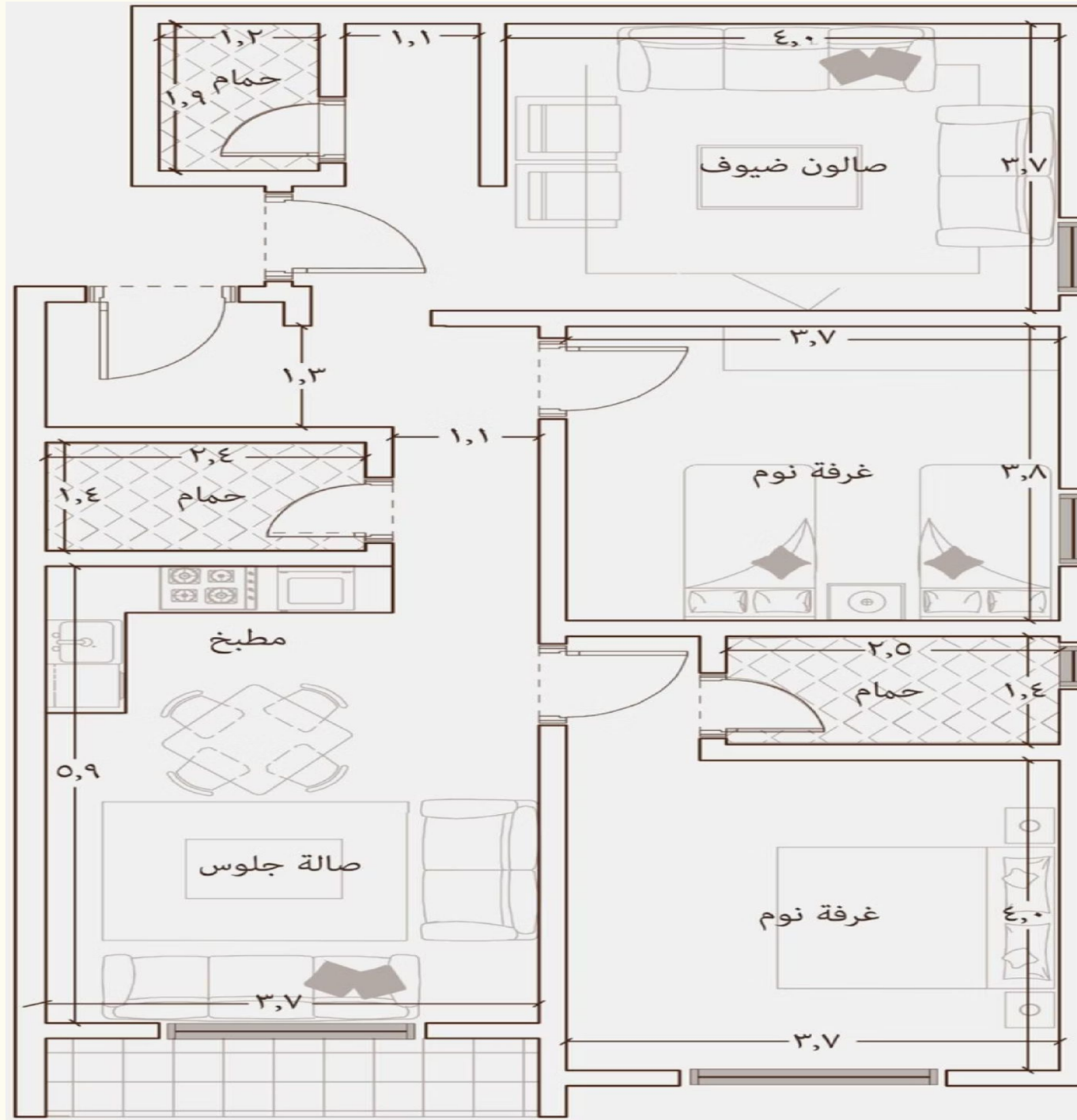
Floors (1-4):

360,000 ريال

Floors (5-8):

380,000 ريال

B2 — Front-facing with a balcony overlooking the central garden



Unit Details

- 3 bedrooms
- 3 bathrooms
- Kitchen
- 1 Spacious living room
- 1 Balcony

Area: 105 m²

Prices

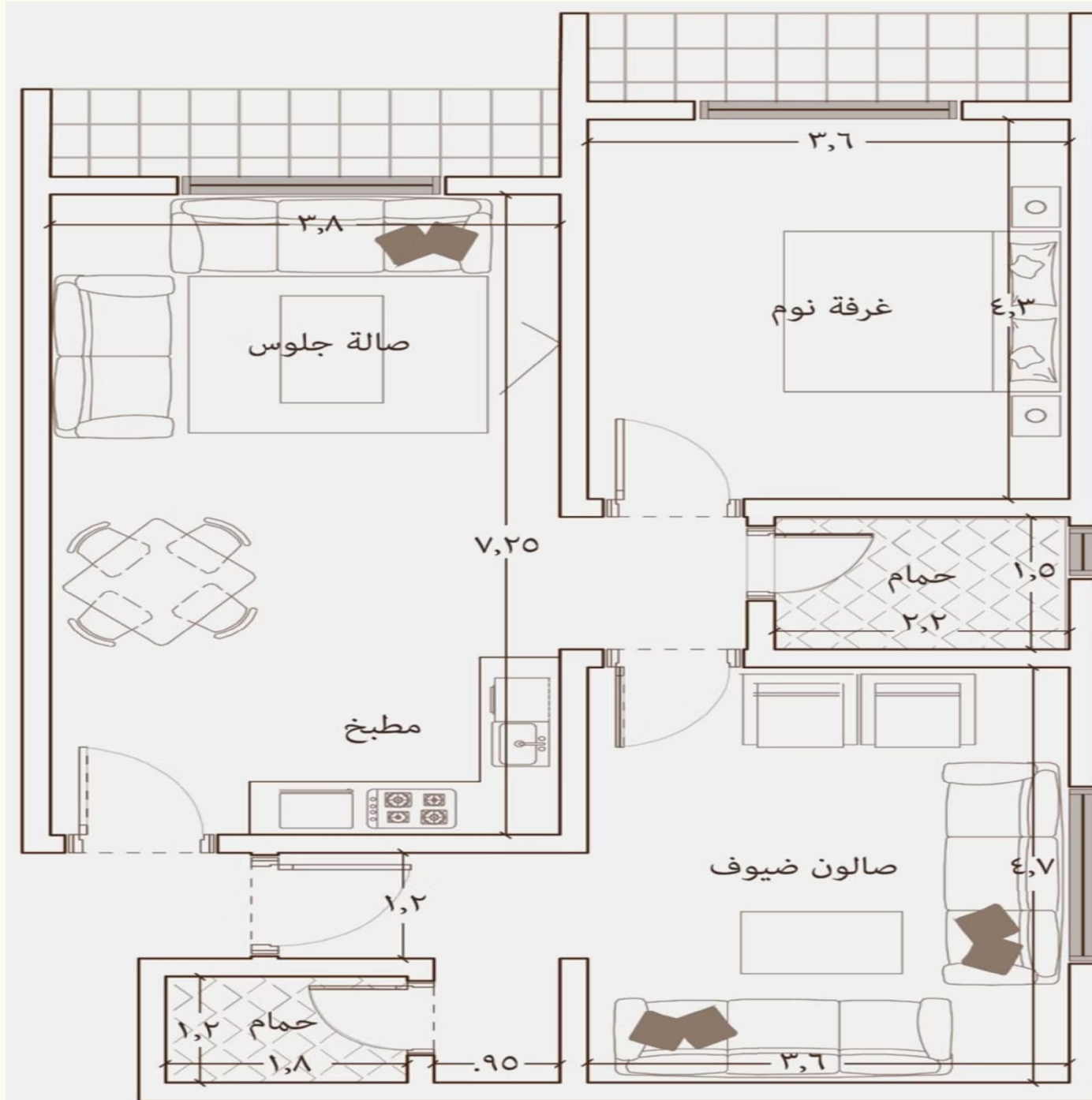
Floors (1-4):

ريال 420,000

Floors (5-8):

ريال 440,000

B3 — Interior with a balcony overlooking the landscape



Unit Details

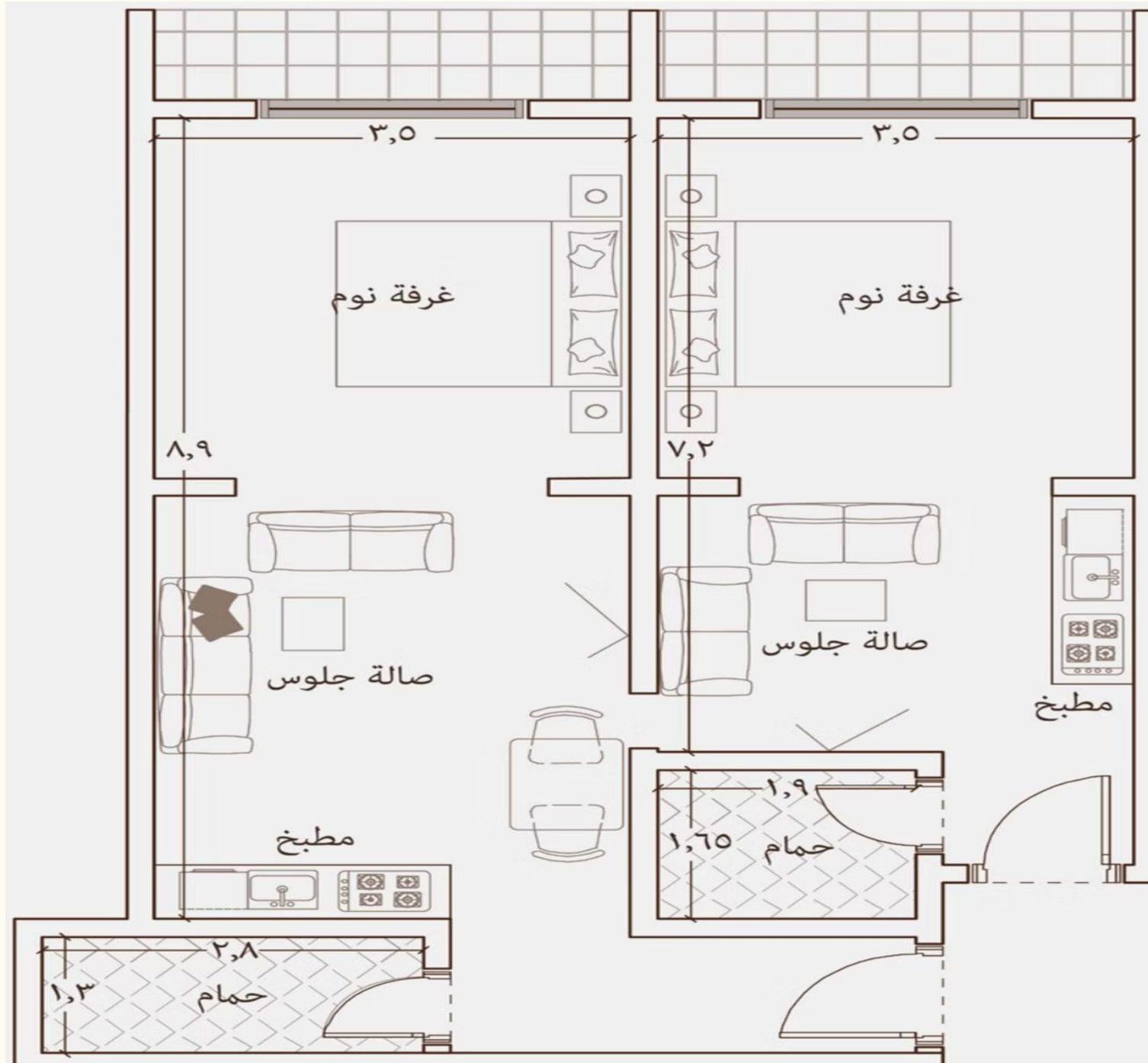
Area: 91 m²

- 2 bedrooms
- 2 bathrooms
- Kitchen
- 1 Spacious living room
- 2 Balconies

Price

ريال 340,000

B4 — Interior with a balcony overlooking the landscape



Unit Details

Area: 86 m²

- 2 bedrooms
- 2 bathrooms
- 2 kitchens
- 2 spacious living rooms
- 2 Balconies

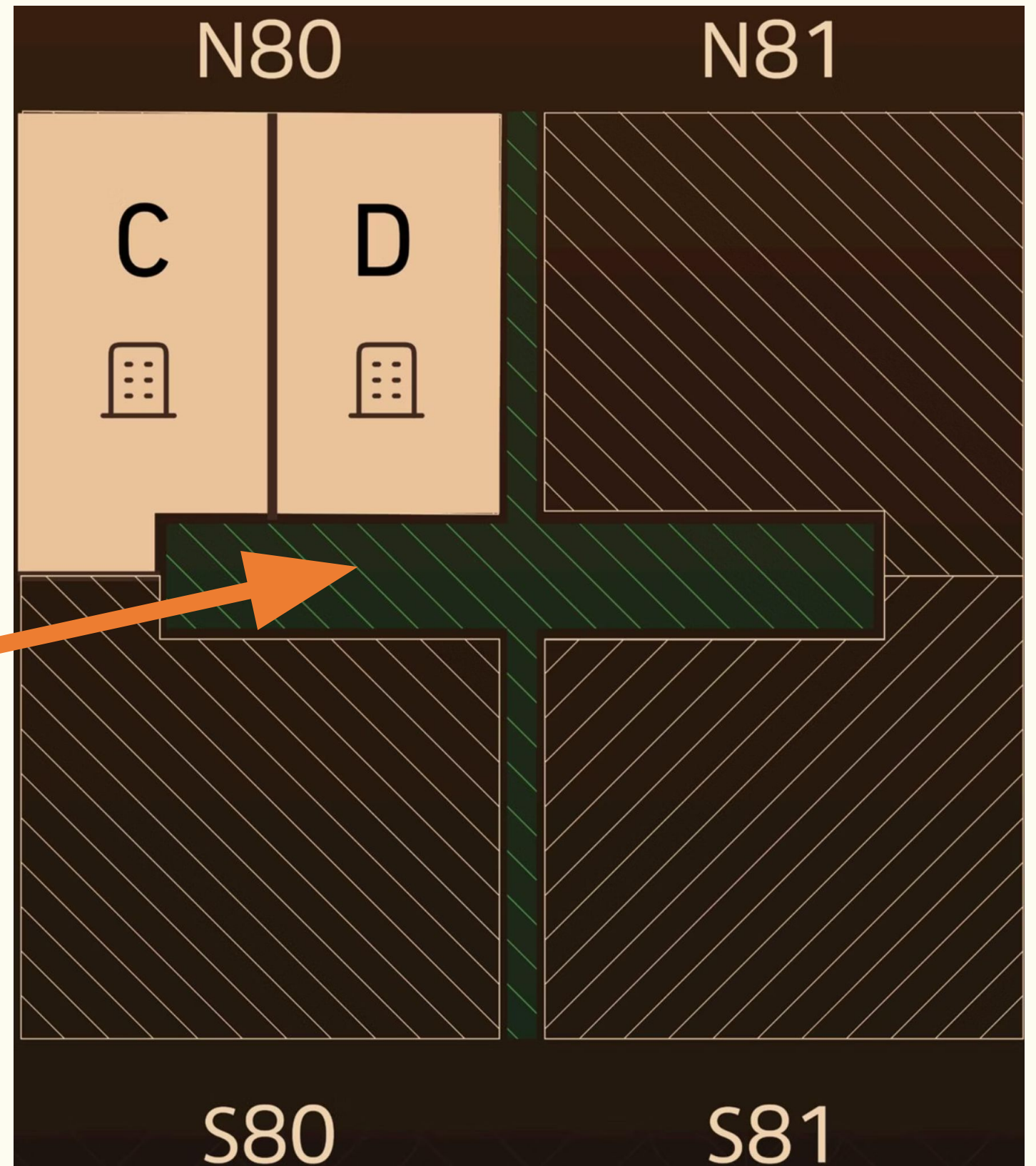
Price

ريال 330,000

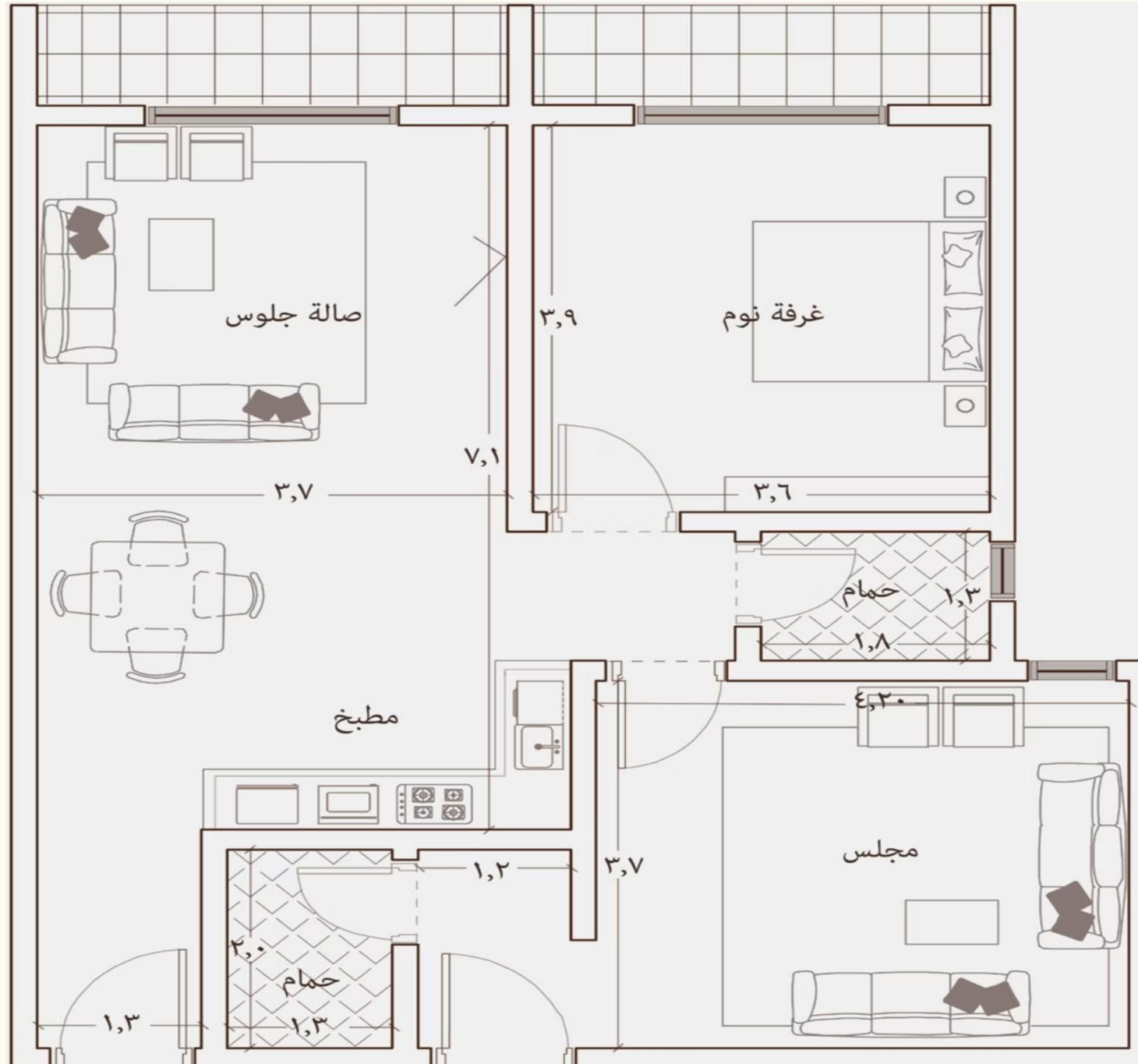
Residential Units — Building N80

Building N80 includes a variety of Type C and D units, ranging from 80 to 106.7 m², with front-facing designs overlooking the central garden and interior units overlooking the landscape.

500 Sqmtr
Garden in
between



C1 — Front-Facing with Balcony



Unit Details

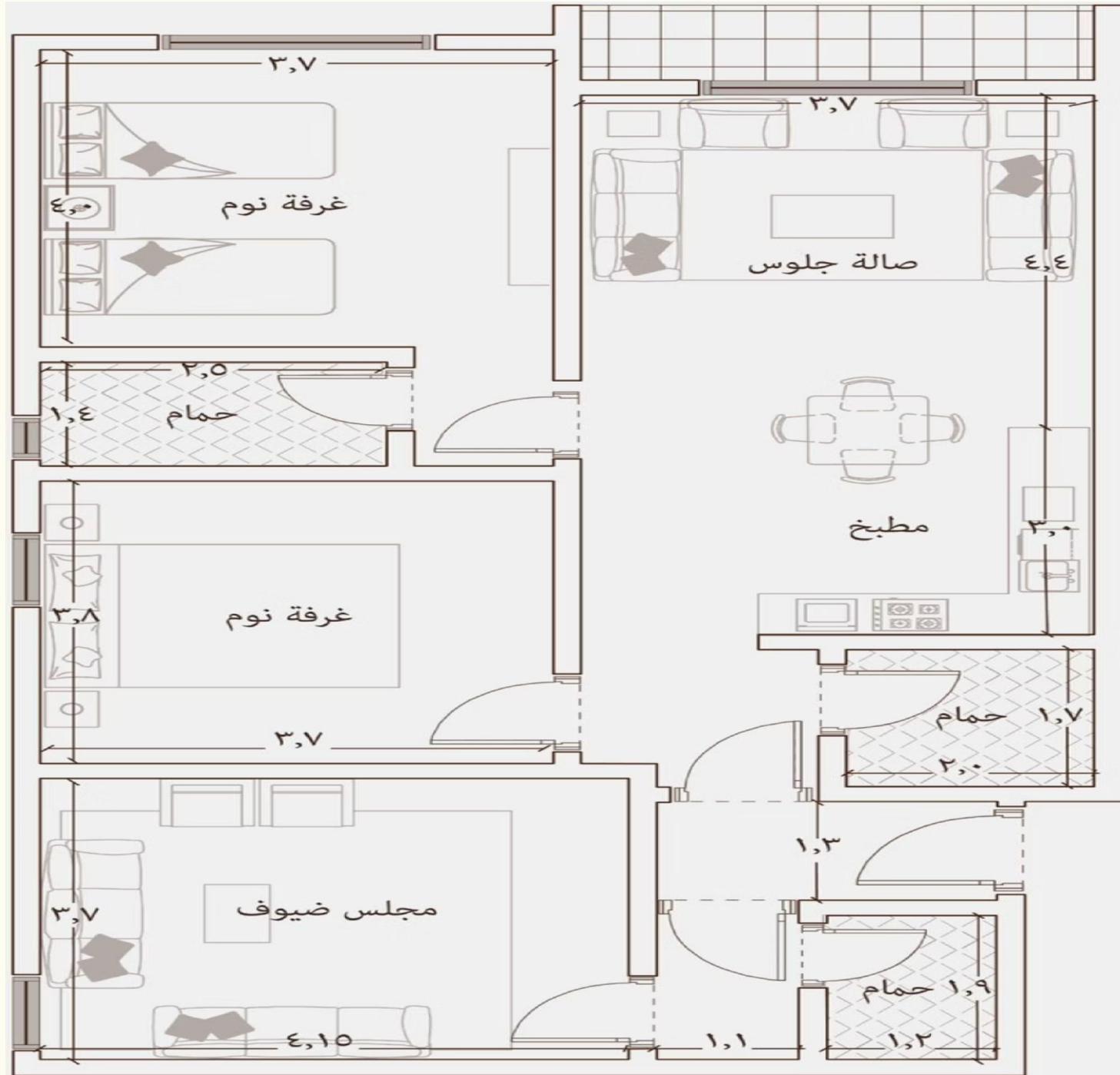
Area: 88 m²

- 2 bedrooms
- 2 bathrooms
- Kitchen
- 1 Spacious living room
- 2 Balconies

Price

350,000 ريال

C2 — Front-Facing with Balcony



Unit Details

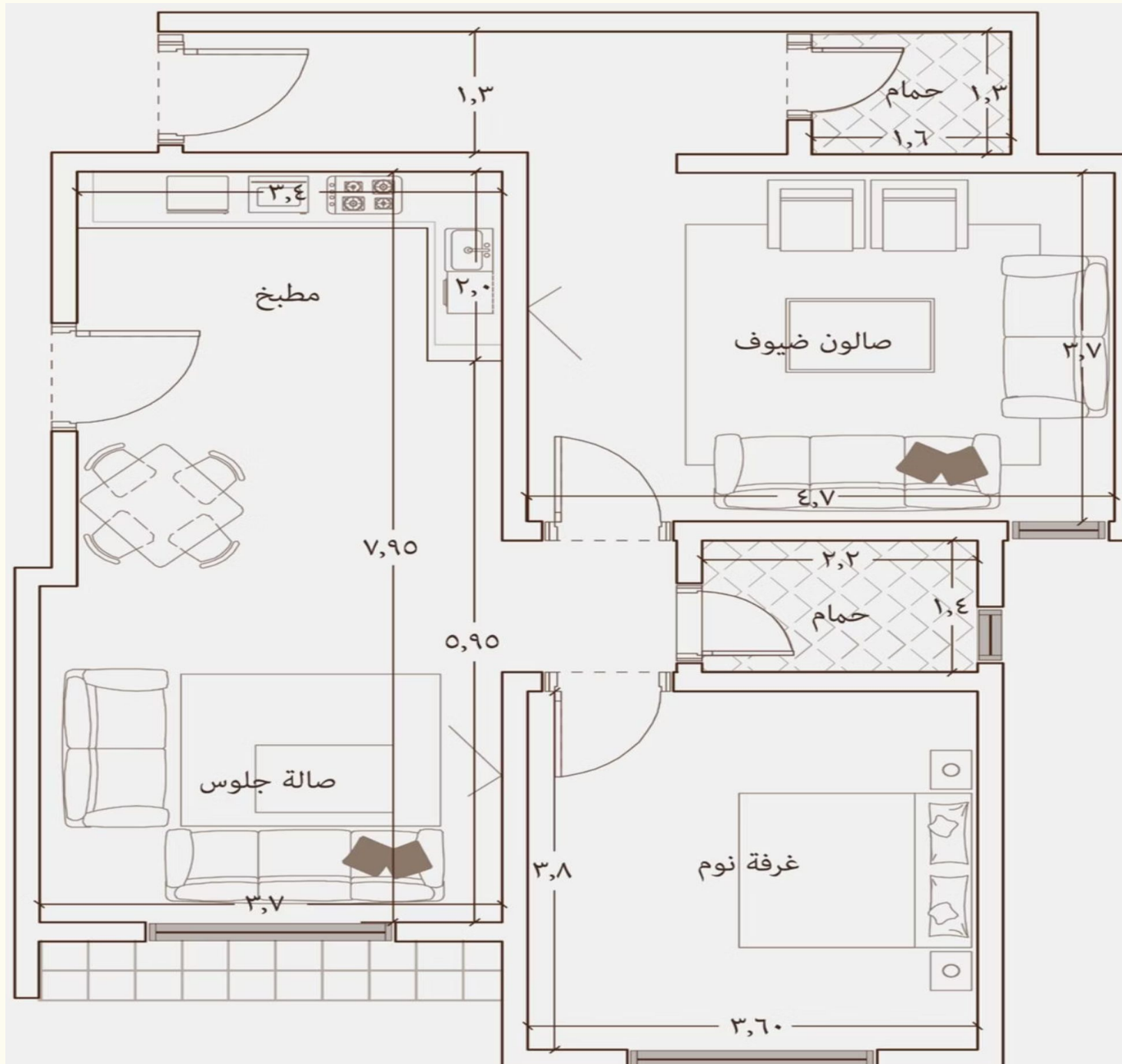
Area: 106.7 m²

- 3 bedrooms
- 3 bathrooms
- Kitchen
- 1 Spacious living room
- 1 Balcony

Price

ريال 410,000

C4 — Interior unit with a balcony overlooking the landscape



Unit Details

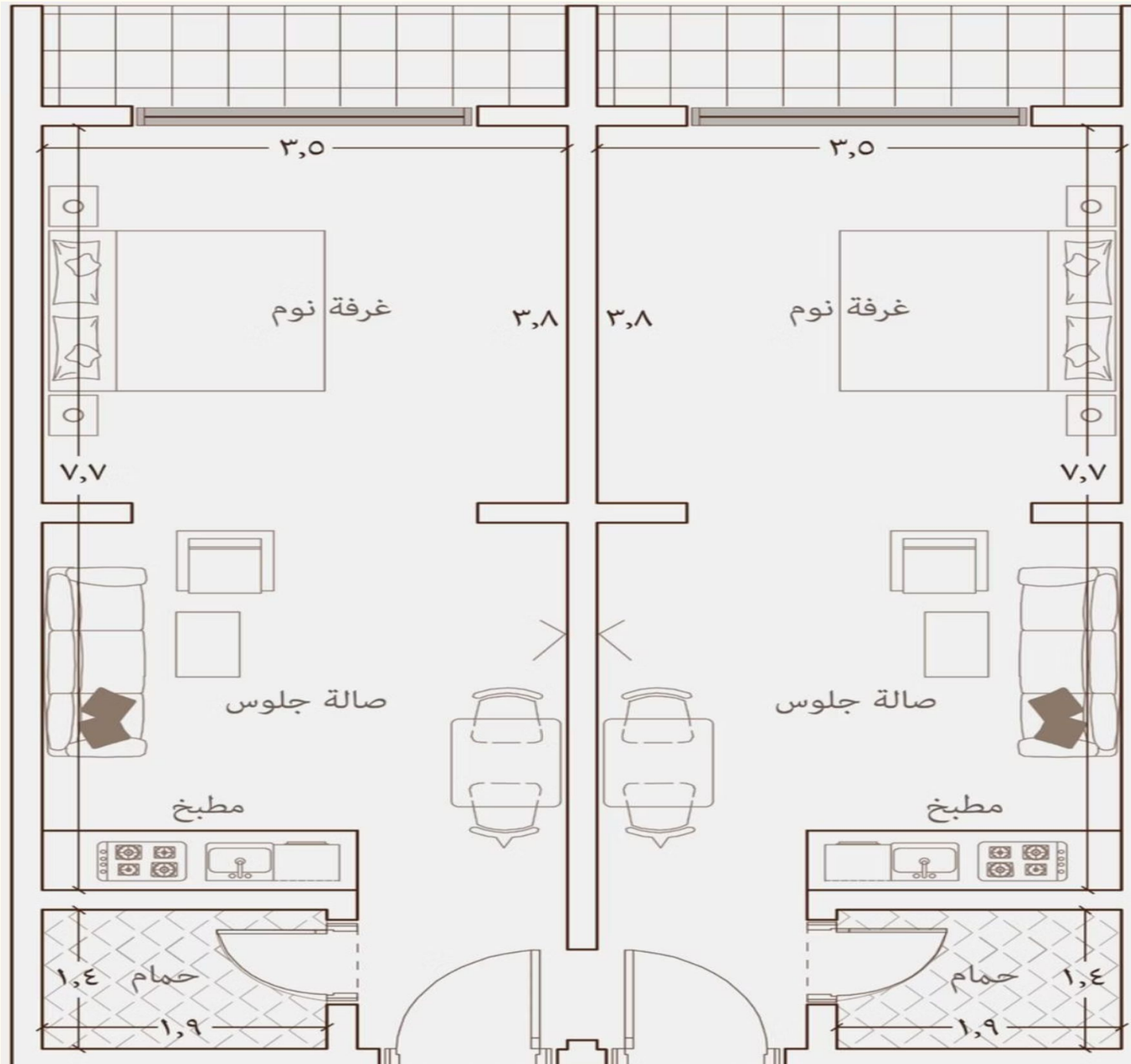
Area: 86 m²

- 2 bedrooms
- 2 bathrooms
- Kitchen
- 1 Spacious living room
- 1 Balcony

Price

ريال 320,000

D1 — Front-facing with balcony



Unit details

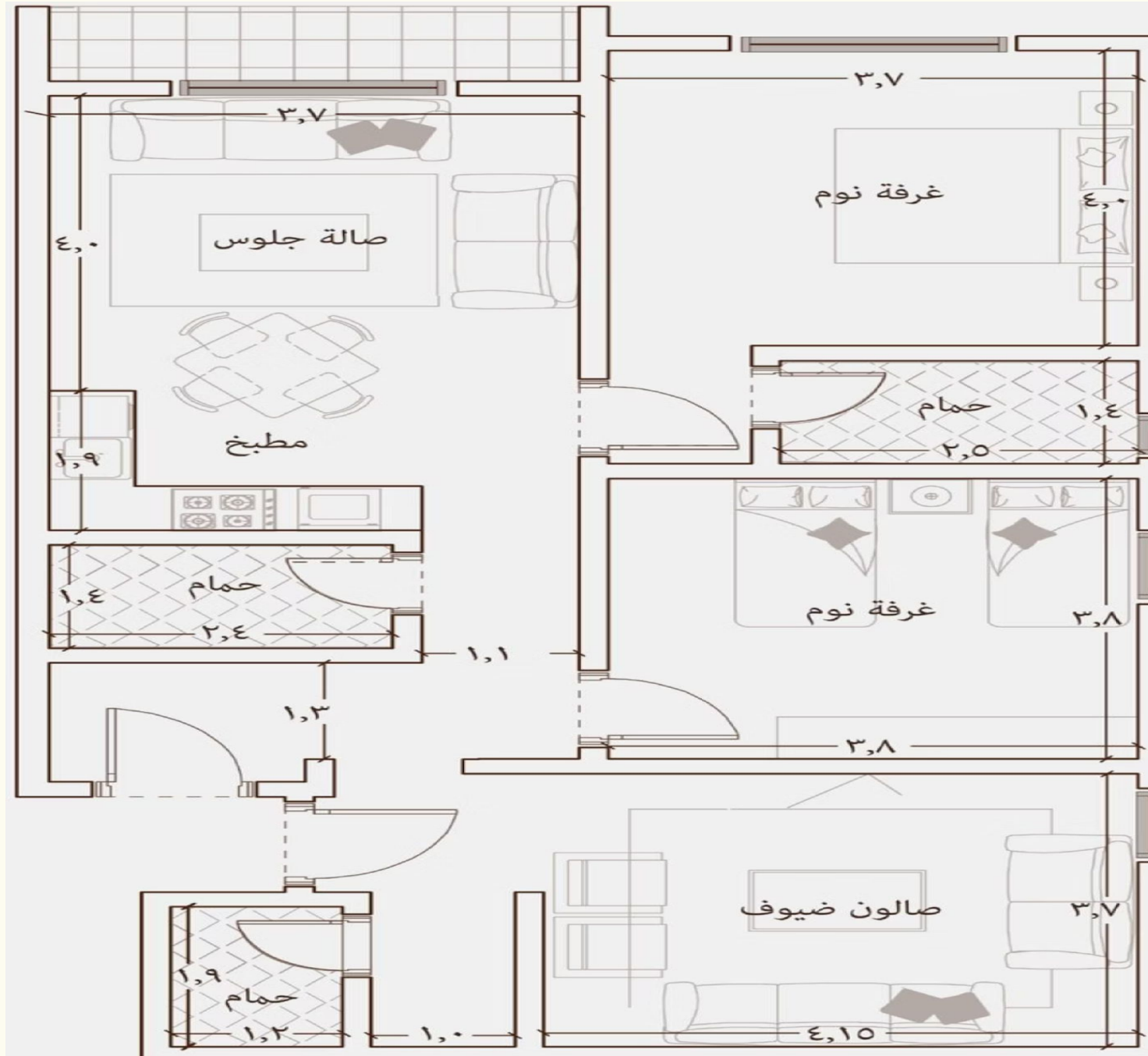
Area: 80 m²

- 2 bedrooms
- 2 bathrooms
- 2 kitchens
- 2 spacious living rooms
- 1 Balcony

Price

350,000 ريال

D2 — Front-Facing with Balcony



Unit Details

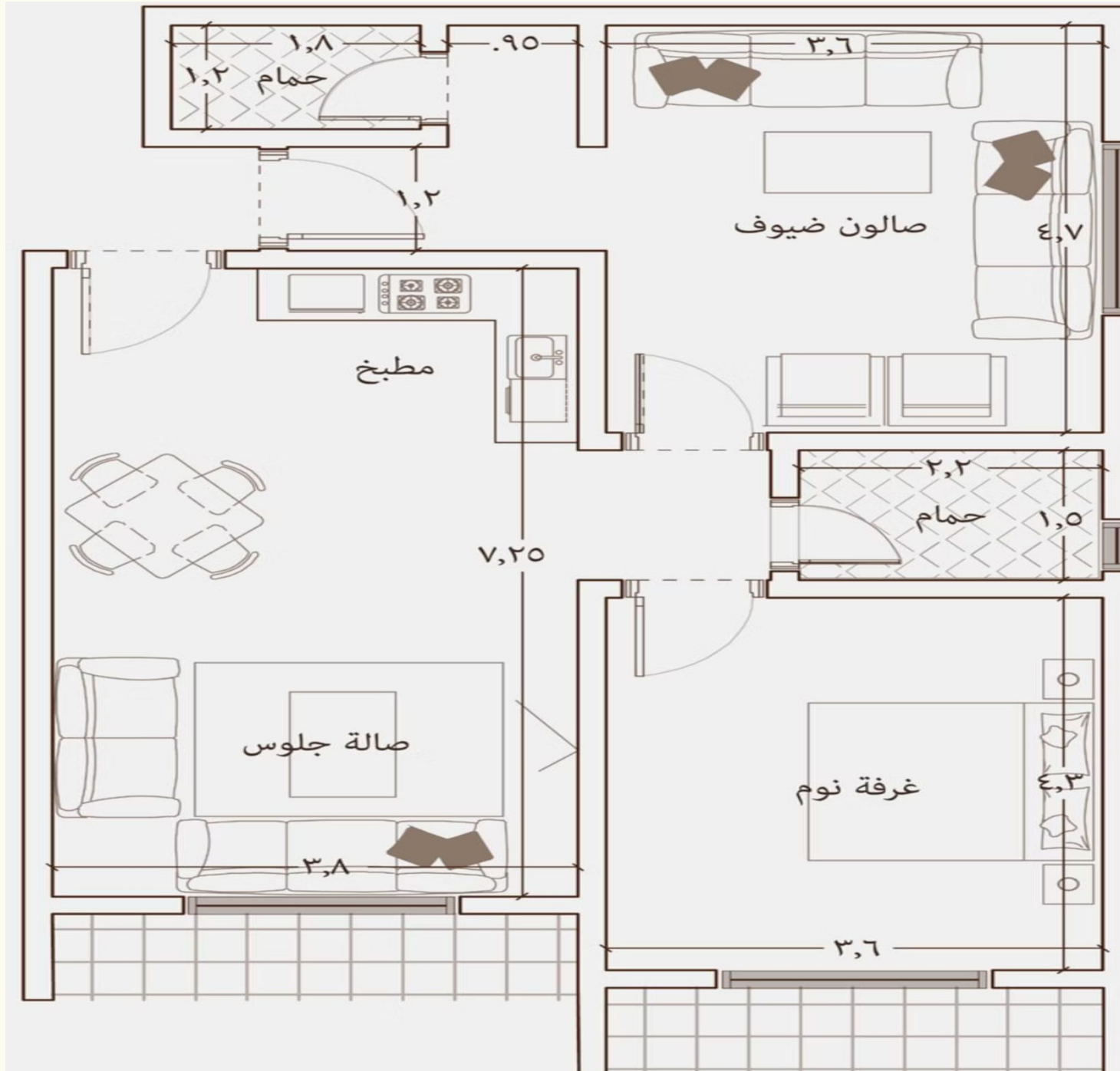
Area: 106 m²

- 3 bedrooms
- 3 bathrooms
- Kitchen
- 1 Spacious living room
- 1 Balcony

Price

ريال 410,000

D3 — Interior with a balcony overlooking the landscape



Unit Details

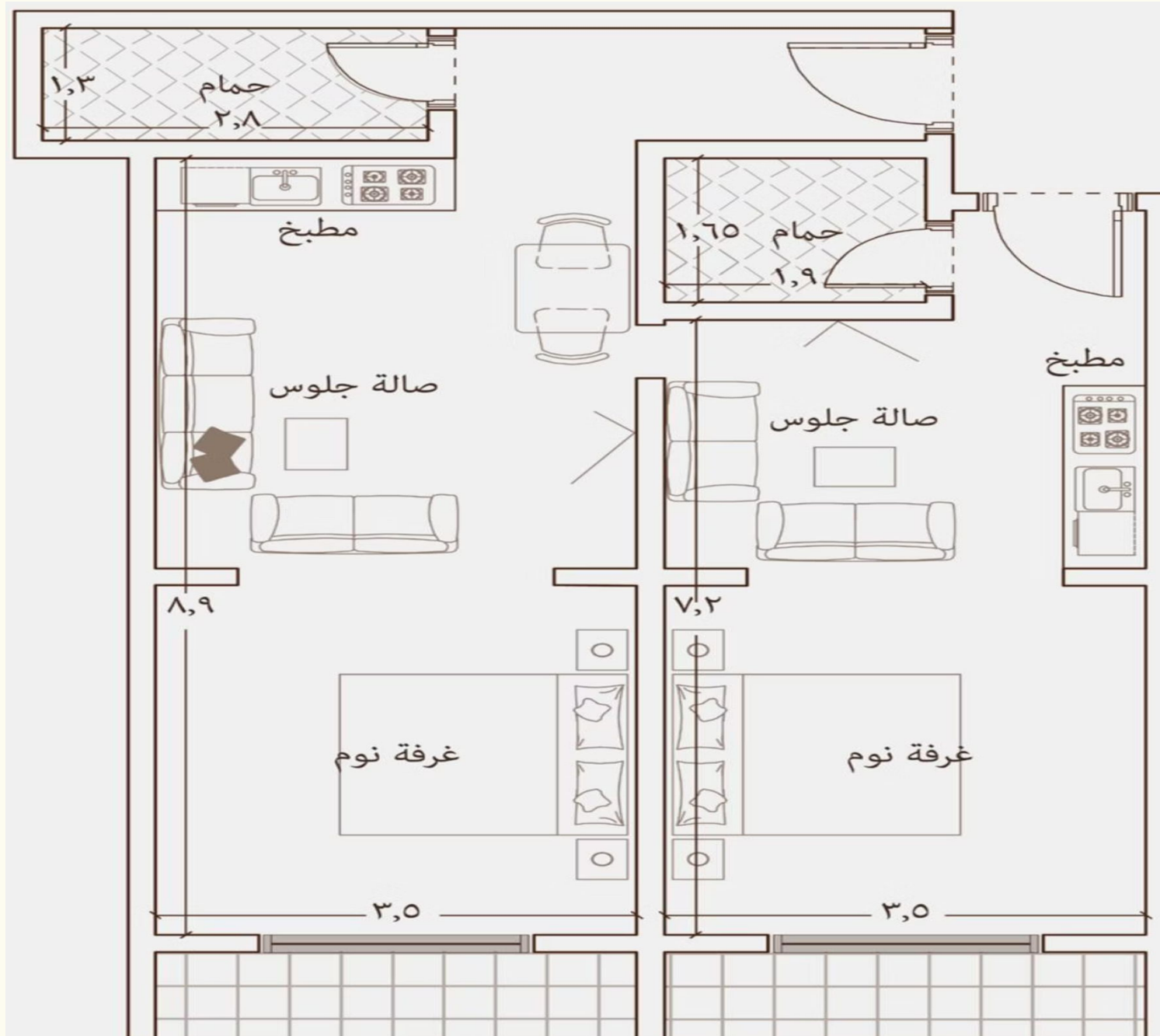
Area: 91 m²

- 2 bedrooms
- 2 bathrooms
- Kitchen
- 1 Spacious living room
- 2 Balconies

Price

330,000 ريال

D4 — Interior with Balcony Overlooking the Landscape



Unit Details

Area: 86 m²

- 2 bedrooms
- 2 bathrooms
- 2 kitchens
- 2 spacious living rooms
- 2 Balconies

Price

ريال 330,000

Unit and Pricing Summary

Unit	Area	Rooms	View	Price
A1	88 m ²	2	Central Garden	ريال 370,000–350,000
A2	106.7 m ²	3	Central Garden	ريال 440,000–420,000
A3	104 m ²	3	Landscape	ريال 390,000
A4	86 m ²	2	Landscape	ريال 320,000
B1	81 m ²	2	Central Garden	ريال 380,000–360,000
B2	105 m ²	3	Central Garden	ريال 440,000–420,000
B3	91 m ²	2	Landscape	ريال 340,000
B4	86 m ²	2	Landscape	ريال 330,000
C1	88 m ²	2	Front	ريال 350,000
C2	106.7 m ²	3	Front	ريال 410,000
C3	104 m ²	3	Landscape	ريال 390,000
C4	86 m ²	2	Landscape	ريال 320,000
D1	80 m ²	2	Front	ريال 350,000
D2	106 m ²	3	Front	ريال 410,000
D3	91 m ²	2	Landscape	ريال 330,000
D4	86 m ²	2	Landscape	ريال 330,000

Start Your Journey to a Better Life

Join Park Residence 2 and experience a new level of luxury in the heart of Jeddah

بصري
BASRI

[Al Aqsa Business Park, Prince Mutaib bin
Abdulaziz Road, Al Rehab, Jeddah 23345](#)

Call or Whatsapp - [054 471 7709](#)

Basri Developments — For contact and inquiries, please visit the project site in Darb Al-Haramain District, Jeddah, Al-Fayha neighborhood and our office.